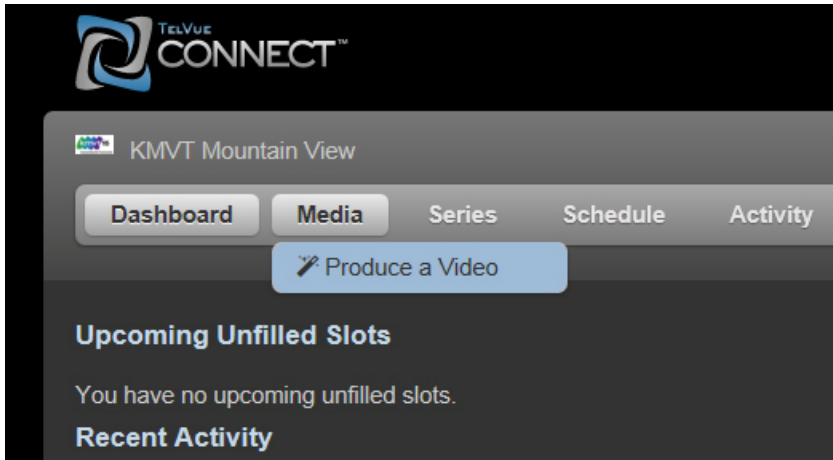
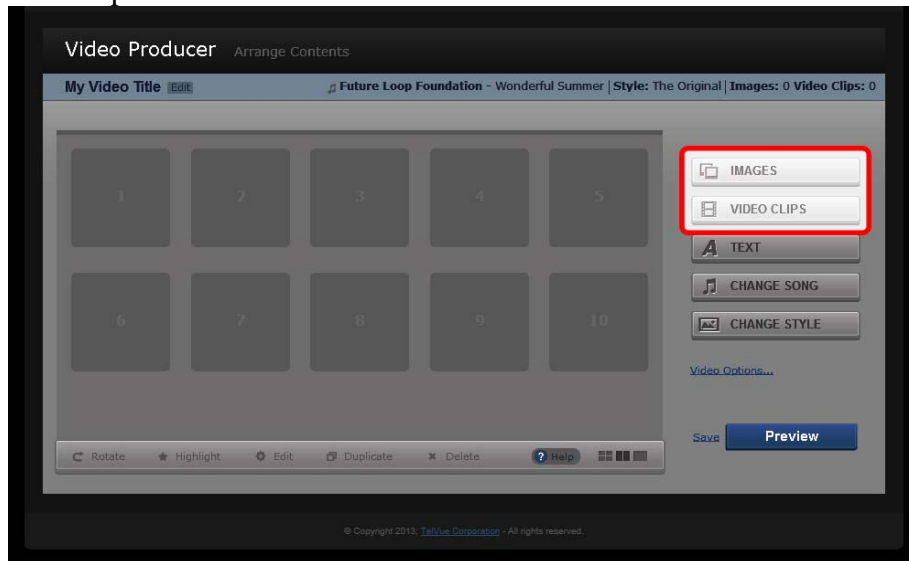


Telvue Video PSA Quick Start Guidelines

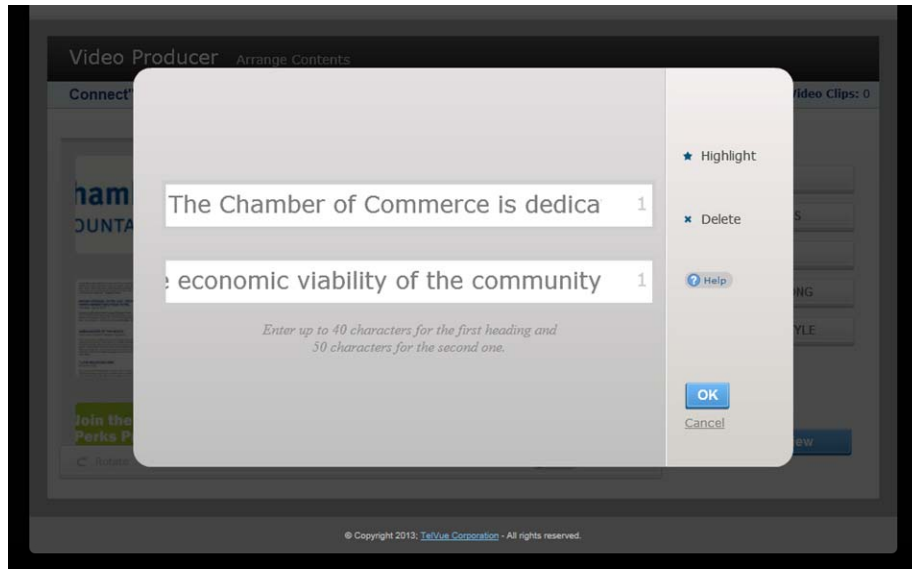
- 1- Contact KMVT for login and password.
- 2- Log Into Telvue Connect
- 3- Select “Produce a Video” from the “Media” dropdown menu located on the “Dashboard”



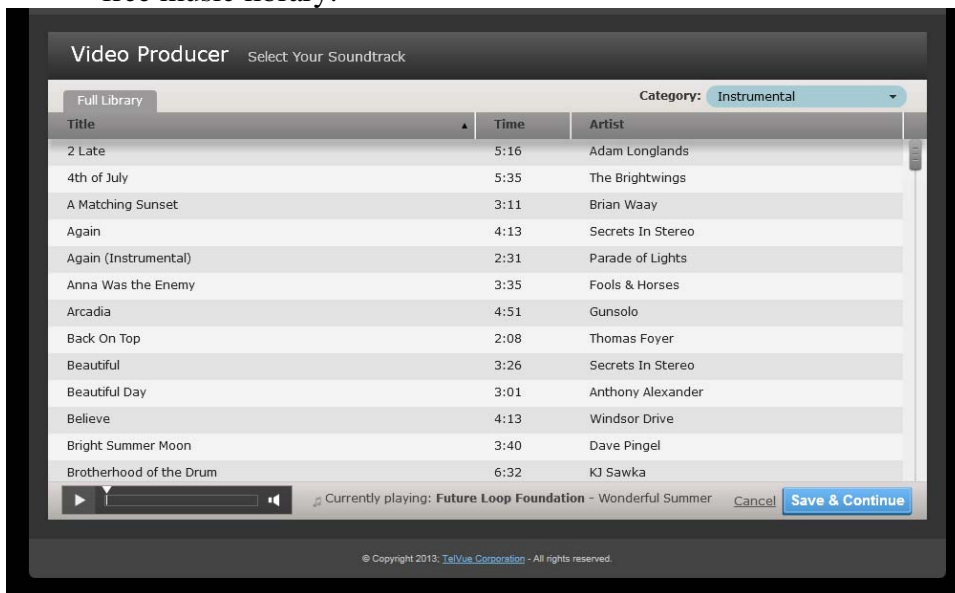
- 4- Add content in the form of “Images, Video Clips, and Text”
 - a. Add “Images and Video Clips” from files that are stored on your computer.



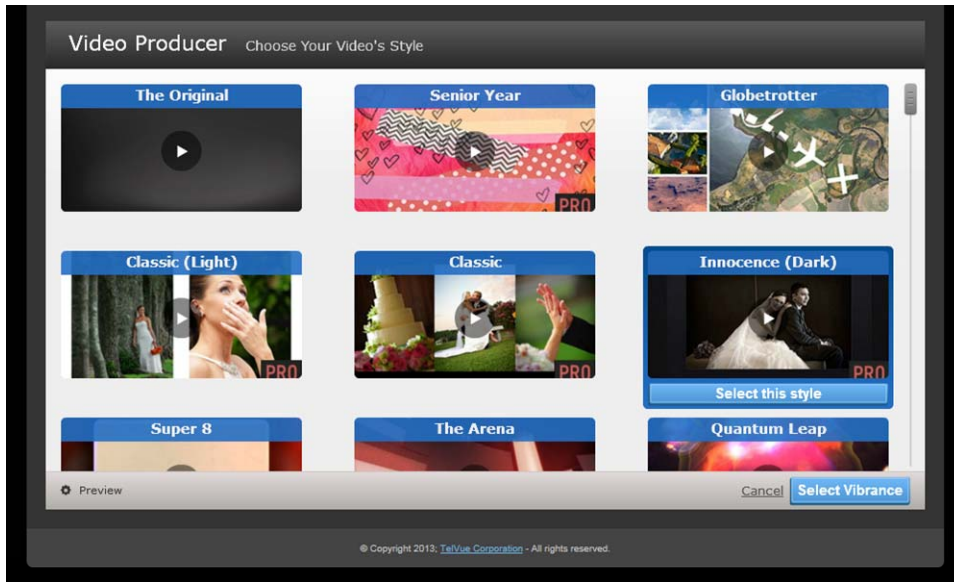
- b. Add “Text” by typing the necessary verbiage. You can add as many text slides as you need, but each slide is limited to two lines, with 40 characters on the first line, and 50 characters on the second line.



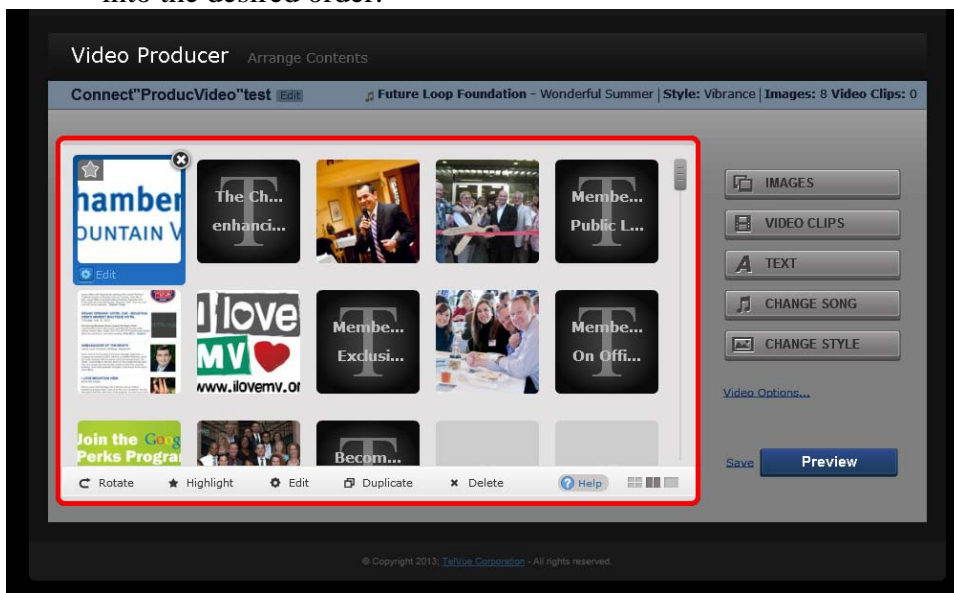
- 5- Change the “Song” by selecting one of over 200 tracks from the included royalty free music library.



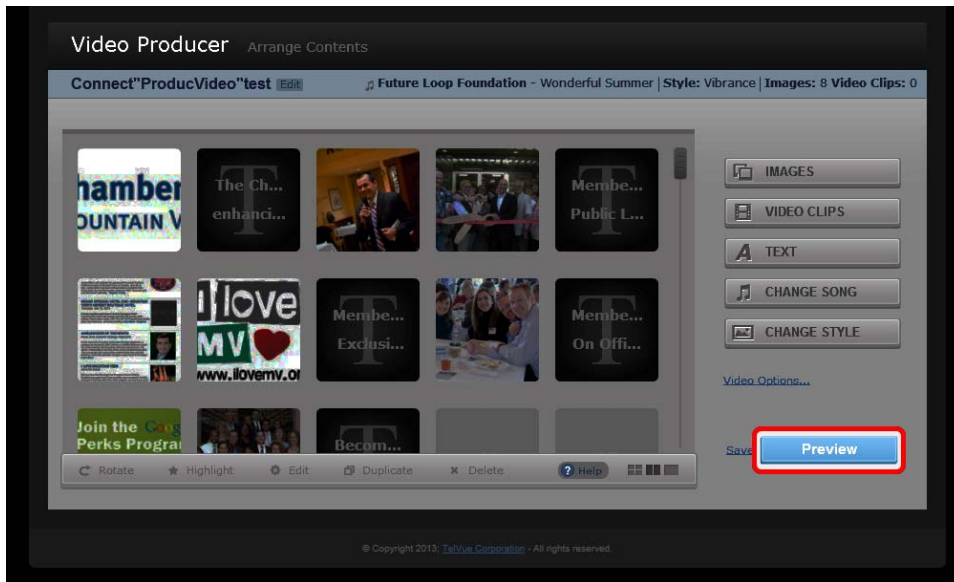
- 6- Change the “Style” of the template, by selecting one of the over 5 dozen styles from the included royalty free template library.



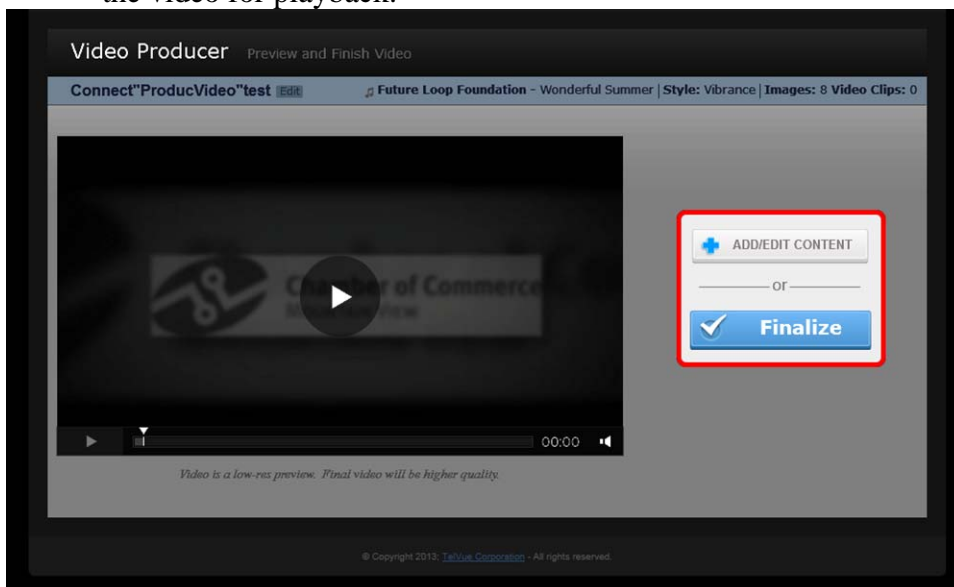
7- Move the content you have added by simply dragging-and-dropping the assets into the desired order.



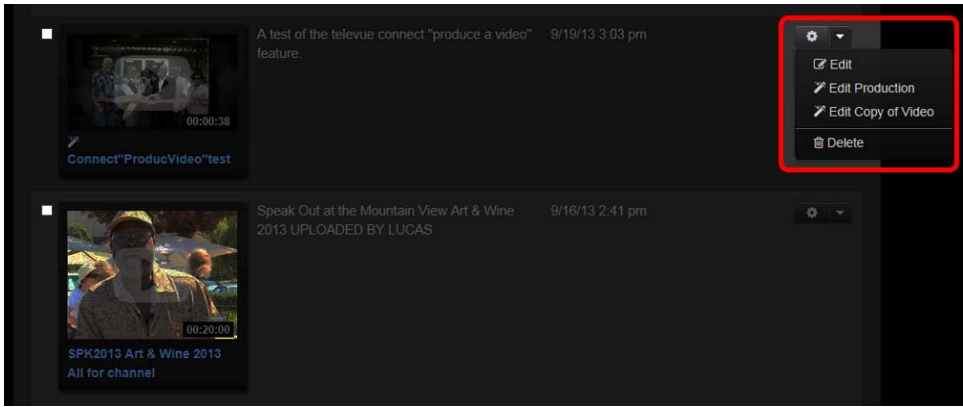
8- Watch the video by selecting the “Preview” button



9- After previewing, you have the option to either “Add/Edit Content” or “Finalize” the video for playback.



10- Once you have finalized your video, select the “edit” option from the video settings drop down menu on the right side. Then give your video a “title” and “short summary”



11- Once finished, visit [kmvt15.org](http://www.kmvt15.org) and complete a Playback Submission Form at <http://www.kmvt15.org/create/episodesubmissionform.html>